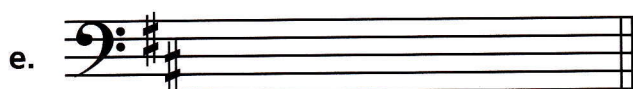
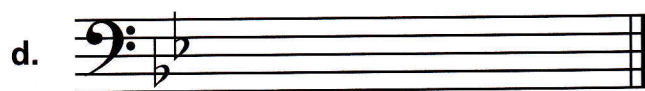
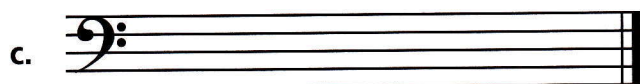
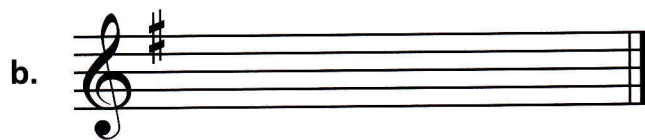
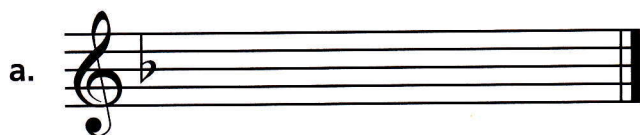


Unit 7 ACTIVITY 5 Name/Class _____***Scales and Key Signatures—C, G, D, F and B \flat***

- 1** For each of the following key signatures, write the scale using whole notes on the staff provided.



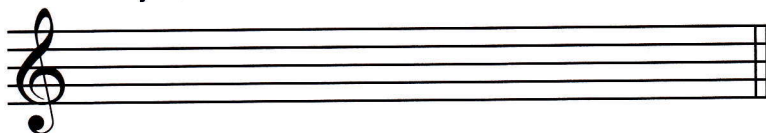
8–40

- 2** Draw the indicated key signature, then write the scale using whole notes. Be sure to include any accidentals.

Key of D



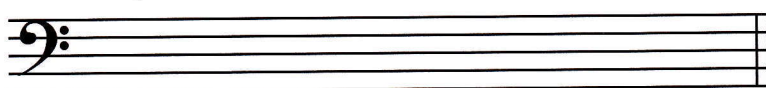
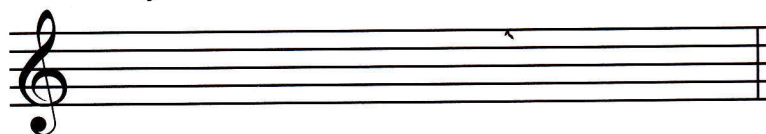
D major scale



Key of F



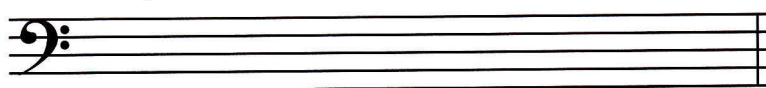
F major scale

Key of B \flat B \flat major scale

Key of G



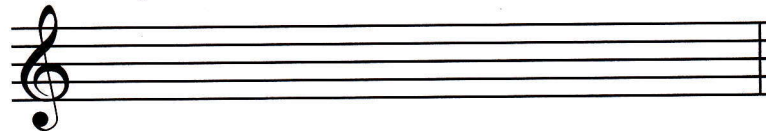
G major scale



Key of C



C major scale



Keys

4–20

Scales

8–40

100

Unit 7 TEST Name/Class _____

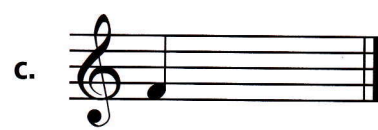
Use after completing page 47.

- 1** Indicate whether the distance between the notes of each pair is a whole step (W) or half step (H).



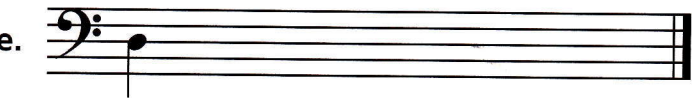
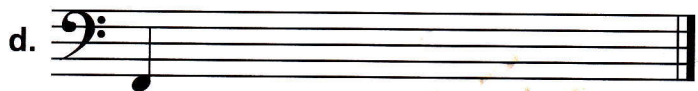
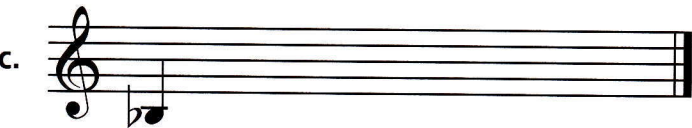
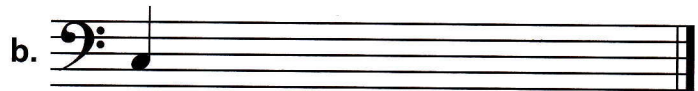
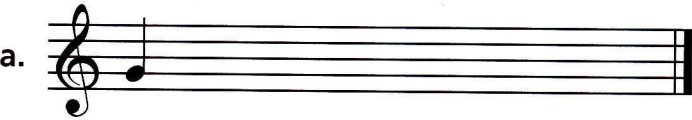
1-20

- 2** Write tetrachords starting on the following notes. Use accidentals as needed.



3-18

- 3** Write major scales that begin on the following notes. Use quarter notes. Be sure to include any accidentals.



7-35

- 4** Name the following major key signatures.



a. ____

b. ____

c. ____

d. ____

3-12

- 5** Write the following major key signatures.



a. F major

b. D major

c. C major

d. B \flat major

e. G major

3-15

100

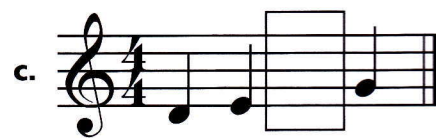
Track 36*

- 1** Listen to the following succession of two notes each. Indicate whether the distance between the two notes is a whole step (W) or half step (H). Each example will be played twice.

a. _____ b. _____ c. _____ d. _____ e. _____ f. _____

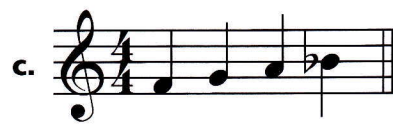
Track 37

- 2** Listen to the four-note tetrachord patterns. Draw the missing notes in the boxes.



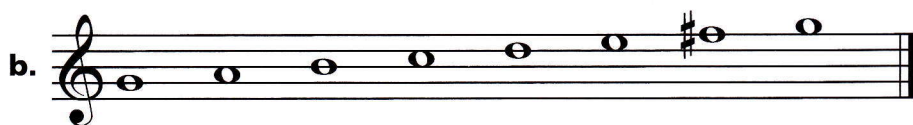
Track 38

- 3** Listen to the four-note tetrachord patterns. One note in each tetrachord will be played incorrectly. Circle the incorrect note.



Track 39

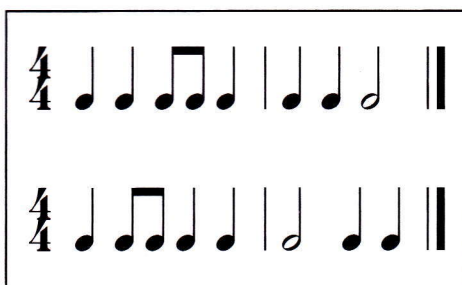
- 4** Listen to a C major scale. In each of the following scales, one note will be played incorrectly. Circle the incorrect note.



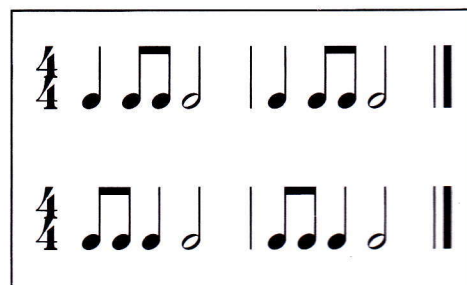
Track 40

- 5** Listen to the G major scale. Circle the rhythm pattern that you hear for each example.

a.



b.



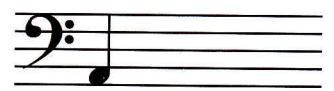
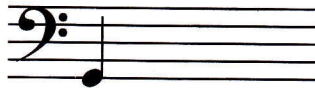
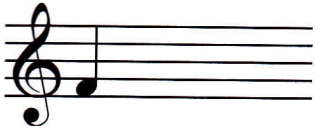
*Track 36 refers to the track number on Ear Training CD 1.

- 1 Indicate whether the distance between each note is a whole step (W) or half step (H).



- 2 The pattern of a tetrachord is whole step, _____, _____, _____.

- 3 Write tetrachords below starting on the following notes. Remember to include the accidentals.



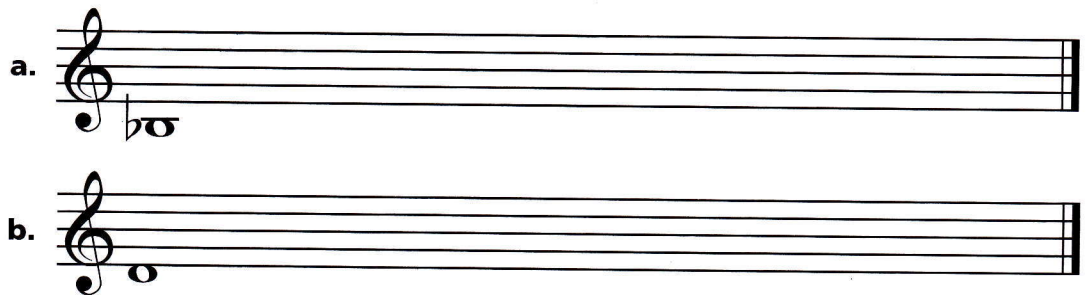
- 4 Draw a line to match each of the following:
- | | |
|------------------------|---------------------------|
| The 2nd tetrachord of: | Is the 1st tetrachord of: |
| D major | D major |
| G major | G major |
| C major | A major |

- 5 The major scale is made up of _____ tetrachords joined by a _____.

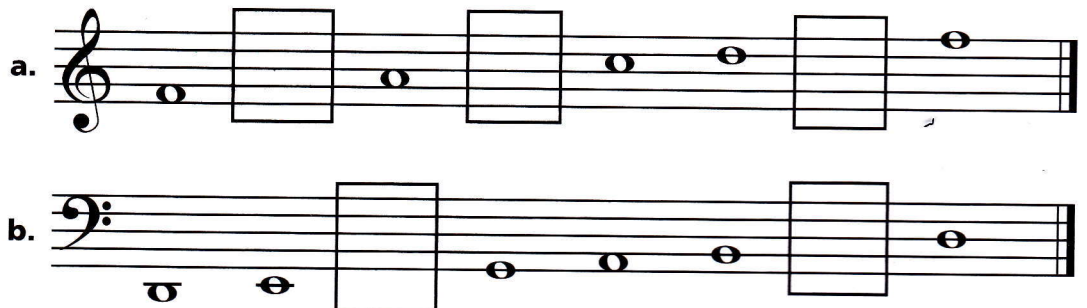
- 6 How many notes are in a major scale? _____

- 7 In a major scale, half steps occur between the _____ & _____ and _____ & _____ scale degrees.

- 8 Write major scales (without key signatures) beginning on the following notes using whole notes.



- 9 Fill in the missing notes in the major scales and indicate with an H above the staff where the half steps occur.



- 10 Fill in the missing notes and note values in the major scales.

