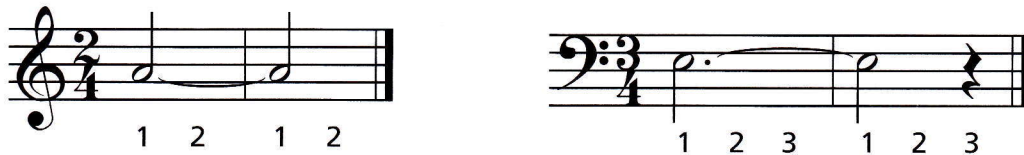


Ties and Slurs

A **TIE** *joins* two notes of the *same* pitch by a curved line over or under the notes. Each note joined by a tie is held for its full value but only the first note is played or sung. The tied note's value is added to the value of the first note.



The TIE should always be written on the opposite side from the note stems.

A **SLUR** *smoothly connects* two or more notes of *different* pitches by a curved line over or under the notes. There is no break in sound between pitches. This is also referred to as **LEGATO** playing or singing.

Aura Lee

American Folk Song



On wind instruments, only the first note of a group of slurred notes should be tongued.

On string instruments, a slur indicates a group of notes to be played in one bow.

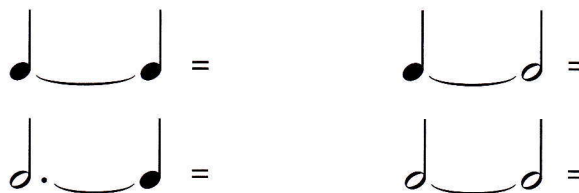
On keyboard instruments, slurs indicate when to lift the hands.



When all of the stems are in the same direction, the slur is written on the side opposite from that of the stems. When stem direction is mixed, the slur is written *above* the notes.

Exercises

- 1** Write the note that equals the tied notes.



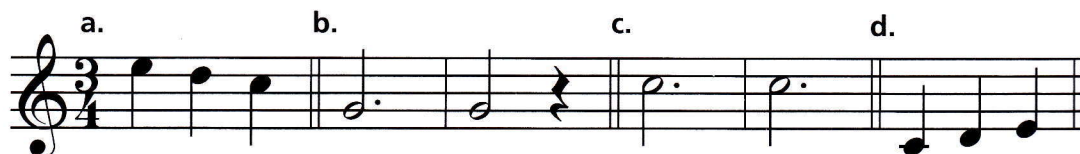
- 2** Write the number of beats in each example.



- 3** In each example, mark an "S" or "T" to indicate whether the musical passage is made up of tied or slurred notes.



- 4** Write a slur or tie in each example and mark an "S" or "T" below.



Writing Slurs and Ties

Add time signatures, then draw either a slur or tie to connect the bracketed notes in each example. Label them "S" or "T."

1

2

3

4

5

6

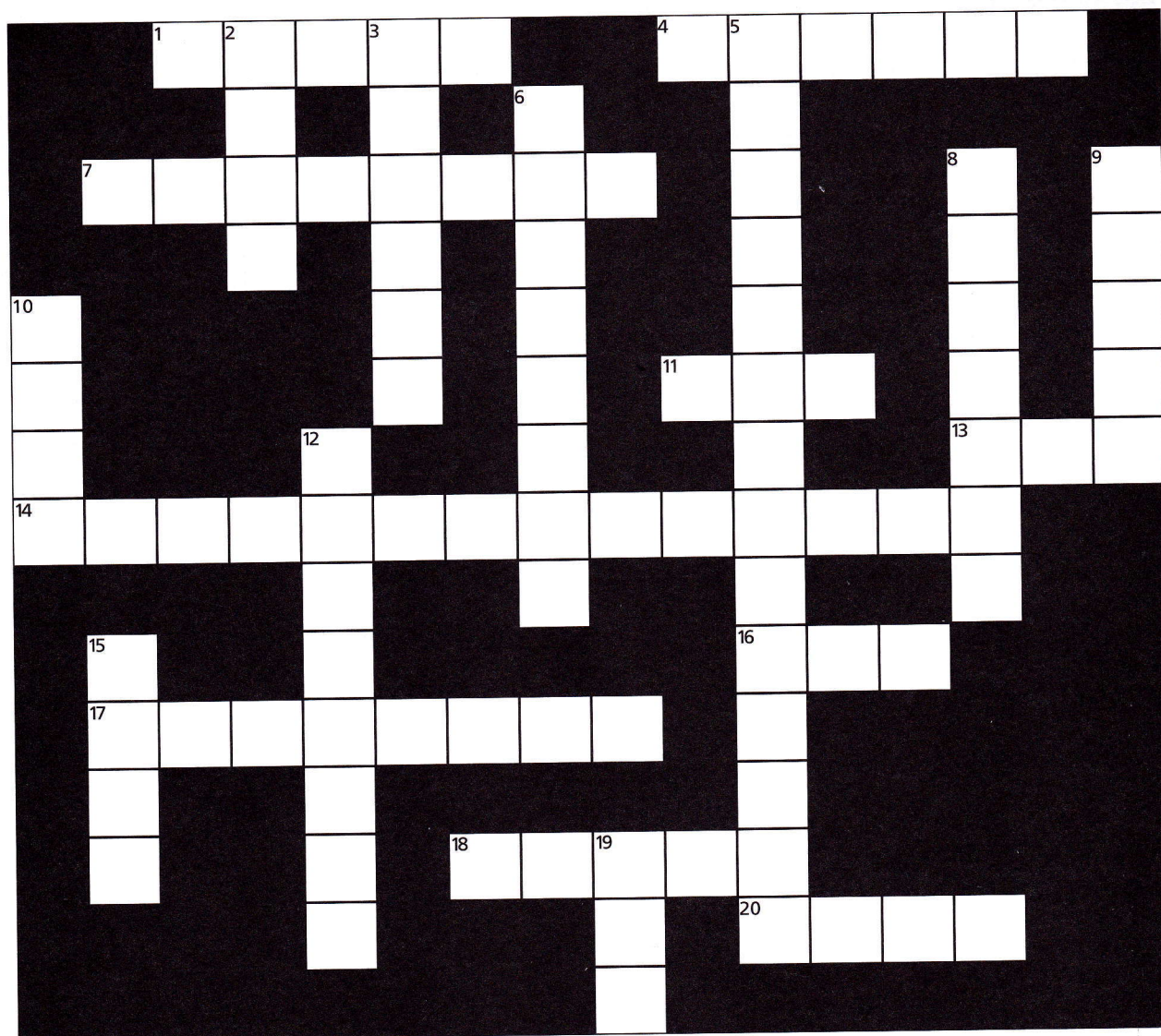
7

8

9

10

T-Sig.	Slur/Tie	
2-20	4-80	100

Unit 3 ACTIVITY 5 Name/Class _____**Music Crossword Puzzle****ACROSS**

1. A _____ rest is used for a full measure of rest.
4. On _____ instruments, a slur indicates a group of notes to be played in one bow.
7. Albert von Tilzer composed the song "Take Me Out to the _____."
11. In $\frac{3}{4}$ time, two tied dotted half notes equal _____ beats.
13. A curved line that joins two notes of the same pitch
14. In $\frac{3}{4}$ and $\frac{4}{4}$ time, this note receives 3 beats. (3 words)
16. A half note receives _____ beats in $\frac{3}{4}$ time.
17. The tie should always be written on the _____ side from the note stems.
18. When stem direction is mixed, the slur is written _____ the notes.
20. A curved line that smoothly connects two or more notes of different pitches

DOWN

2. Two quarter rests equal the value of one _____ rest.
3. To play or sing notes smoothly connected
5. $\frac{2}{4}$ and $\frac{3}{4}$ are referred to as _____.
6. "Aura Lee" is an _____ folk song.
8. In $\frac{2}{4}$ time, the _____ note receives 1 beat.
9. A whole rest receives _____ beats in $\frac{3}{4}$ time.
10. On _____ instruments, only the first note of a group of slurred notes should be tongued.
12. On _____ instruments, slurs indicate when to lift the hands.
15. If the quarter note receives 1 beat, then the bottom number of the time signature is _____.
19. In $\frac{2}{4}$ time, the maximum number of half notes in a bar is _____.

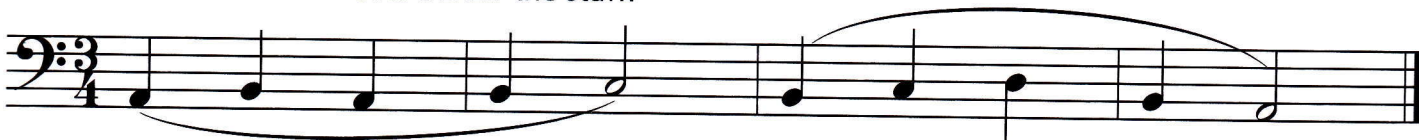
Fill in the blanks:

- 1 In $\frac{2}{4}$, $\frac{3}{4}$ and $\frac{4}{4}$ time, the _____ note receives one beat.
- 2 In $\frac{2}{4}$ time, there are _____ beats per measure.
- 3 In $\frac{3}{4}$ time, there are _____ beats per measure.
- 4 In $\frac{3}{4}$ time, a dotted half note receives _____ beats.
- 5 In $\frac{4}{4}$ time, a dotted half note receives _____ beats.
- 6 In $\frac{2}{4}$ time, a whole rest receives _____ beats.
- 7 In $\frac{3}{4}$ time, a whole rest receives _____ beats.
- 8 In $\frac{4}{4}$ time, a whole rest receives _____ beats.
- 9 Legato singing or playing means to play the music _____.
- 10 On wind instruments, only the first note of a group of _____ notes should be tongued.
- 11 A slur occurs when 2 or more notes of (circle one) **the same** or **different** pitch(es) are joined by a curved line.
- 12 A tie occurs when 2 notes of (circle one) **the same** or **different** pitch(es) are joined by a curved line.

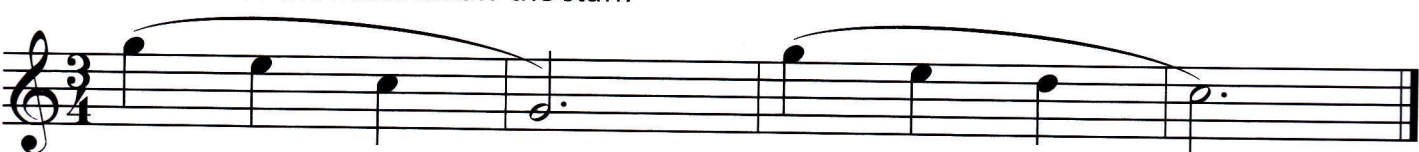
- 13 Draw an X above the note where you would change direction of the bow on a string instrument. Write the names of the notes below the staff.



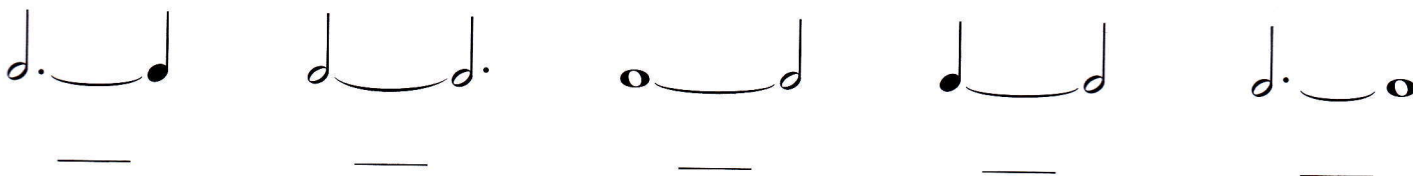
- 14 Draw an X above the notes where you would tongue on a wind instrument. Write the names of the notes below the staff.



- 15 Draw an X before the notes where you would lift the hand on a keyboard instrument. Write the names of the notes below the staff.



- 16 Write the number of beats in each example on the line.



- 17 Write the correct time signature in the appropriate place and the beats below the staff.

