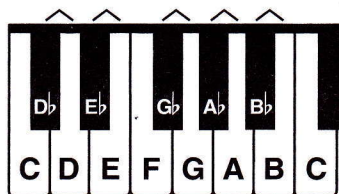
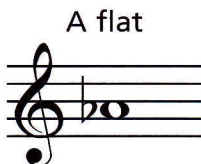


Flats

The FLAT sign (♭) before a note lowers the pitch of that note. On the keyboard, play the next key to the left, whether black or white.



When speaking of flatted notes, the word "flat" comes after the letter name, as in **A flat**. However, in written music, the flat sign comes before the note.



To draw a flat sign, first draw a vertical line:



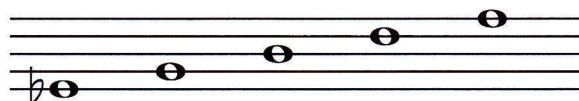
then add the heavier curved line:



When a flat sign is attached to a line note, the flat is centered on the line.



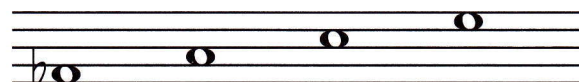
Add flat signs to the line notes below.



When a flat sign is attached to a space note, the flat is centered in the space.

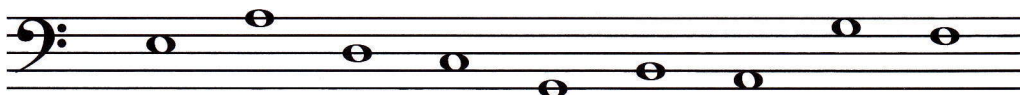


Add flat signs to the space notes below.

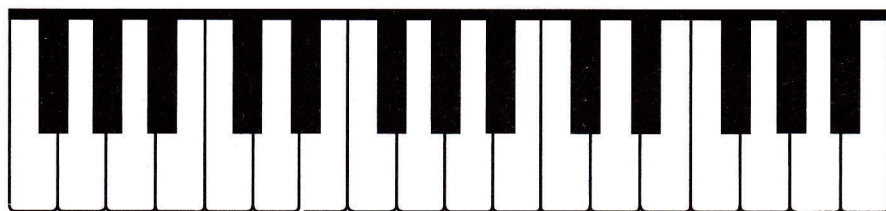


Exercises

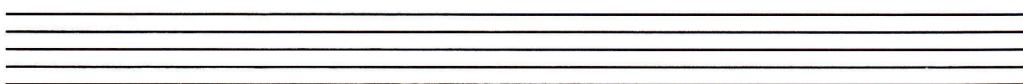
- 1** In the example, write flat signs before each note, then name the notes.



- 2** Write the names of the piano keys in the boxes.

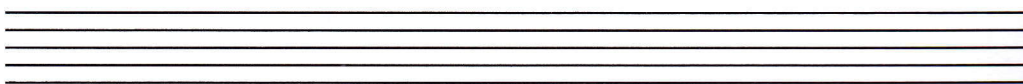


- 3** Write a treble clef and the notes indicated on the staff using half notes.



G♭ D♭ C♭ A♭ E♭ B♭ F♭

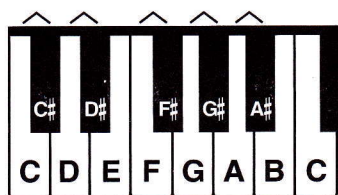
- 4** Write a bass clef and the notes indicated on the staff using quarter notes.



E♭ C♭ F♭ A♭ D♭ B♭ G♭

Sharps

The SHARP sign (♯) before a note raises the pitch of that note. On the keyboard, play the next key to the right, whether black or white.

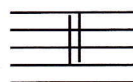


When speaking of sharped notes, the word "sharp" comes after the letter name, as in **C sharp**.

However, in written music, the sharp sign comes before the note.



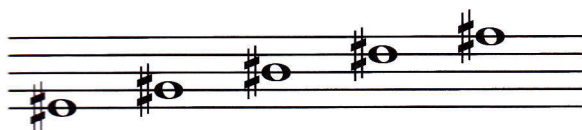
To draw a sharp sign, first draw two vertical lines:



then add the heavier
slanting lines:



When a sharp sign is attached to a line note, the sharp is centered on the line.



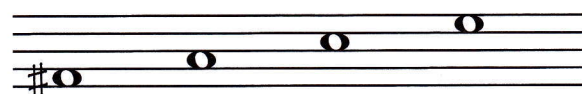
Add sharp signs to the line notes below.



When a sharp sign is attached to a space note, the sharp is centered in the space.



Add sharp signs to the space notes below.

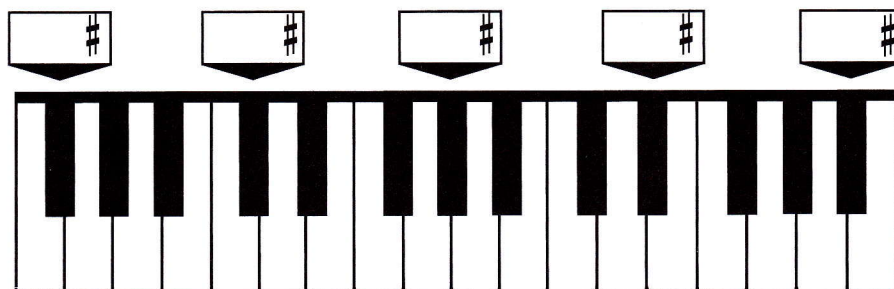


Exercises

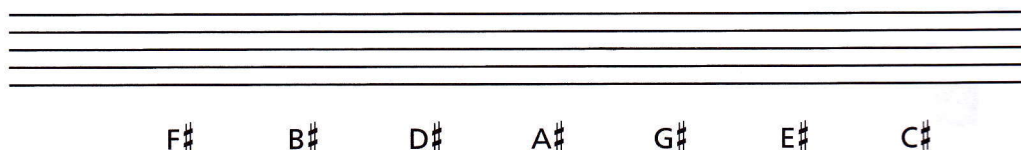
- 1** In the example, write sharp signs before each note, then name the notes.



- 2** Write the names of the piano keys in the boxes.



- 3** Write a treble clef and the notes indicated on the staff using single 8th notes.



- 4** Write a bass clef and the notes indicated on the staff using dotted half notes.

