

The Remaining Major Scales with Key Signatures

Once you are familiar with how to build tetrachords, it is easy to build any major scale. Altogether, there are 15 major scales: 7 sharp keys, 7 flat keys, and the key of C, which has no sharps or flats.

You are already familiar with the scales and key signatures of five of the 15:

C, G (F#), D (F#, C#), F (Bb) and Bb (Bb, Eb). Here are the remaining 10.

A Major (3 #s: F#, C#, G#)

Eb Major (3 bs: Bb, Eb, Ab)



E Major (4 #s: F#, C#, G#, D#)

Ab Major (4 bs: Bb, Eb, Ab, Db)



B Major (5 #s: F#, C#, G#, D#, A#)

Db Major (5 bs: Bb, Eb, Ab, Db, Gb)



F# Major (6 #s: F#, C#, G#, D#, A#, E#)

Gb Major (6 bs: Bb, Eb, Ab, Db, Gb, Cb)



C# Major (7 #s: F#, C#, G#, D#, A#, E#, B#)

Cb Major (7 bs: Bb, Eb, Ab, Db, Gb, Cb, Fb)



The complete order of sharps in the key signature is:

F C G D A E B.

A helpful reminder:

Fat Cats Go Down Alleys Eating Bread.

The complete order of flats in the key signature is:

B E A D G C F.

A helpful reminder: **BEAD + G C F.**

There are, however, only 12 unique *sounding* major scales. The following are **ENHARMONIC SCALES**; they sound the same but are written differently:

B major sounds the same as **Cb major**

F# major sounds the same as **Gb major**

C# major sounds the same as **Db major**

Exercises

- 1** Name the following major key signatures.



a. _____ b. _____ c. _____ d. _____ e. _____ f. _____

- 2** Write the following key signatures.



a. Eb major b. E major c. Ab major d. C# major e. Cb major f. A major

Unit 8 ACTIVITY 1

Name/Class _____

Key Signatures

- 1** Remember: In sharp keys, going up a half step from the last sharp in the key signature determines the name of that key. In flat keys, one flat is the key of F and for two or more flats, the next-to-last flat is the name of the key. Draw a line matching the correct key signatures on the left with their key names on the right.

Sharp Keys

D major



B major



F# major



G major



C# major



A major



E major

Flat Keys

E♭ major



F major



C♭ major



D♭ major



B♭ major



G♭ major

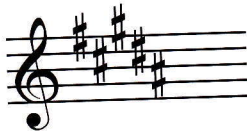


A♭ major

6-84

- 2** Name each key signature, then draw a line connecting the enharmonic key signatures.

Key of: _____



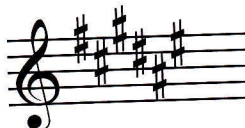
Key of: _____

Key of: _____



Key of: _____

Key of: _____



Key of: _____

- 3** There are 15 major scales but only _____ uniquely sounding scales.

1

Key

2-12

Match

1-3

100