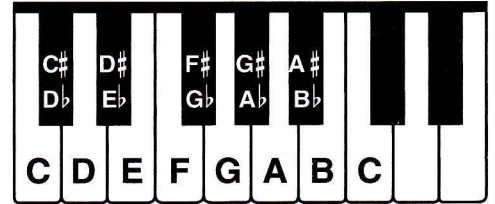


## Chromatic Scale

The CHROMATIC SCALE is made up entirely of half steps in consecutive order. On a keyboard, therefore, it uses every key, black and white. When the scale goes up, it is called *ascending*; when the scale goes down, it is called *descending*.

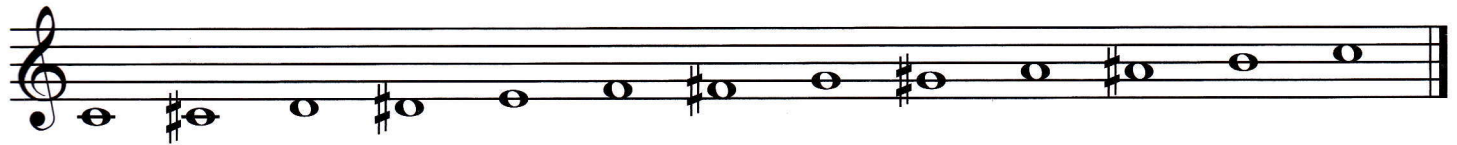
The chromatic scale may begin on any note.  
In a chromatic scale, there are 12 tones.



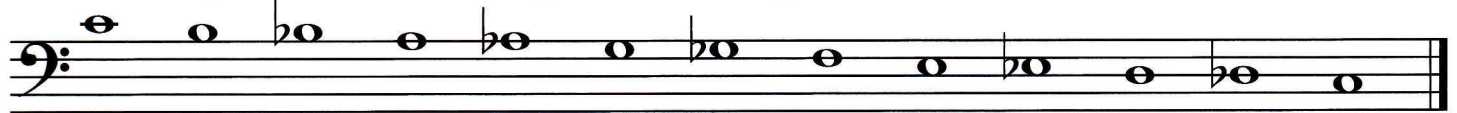
### C Chromatic Scale



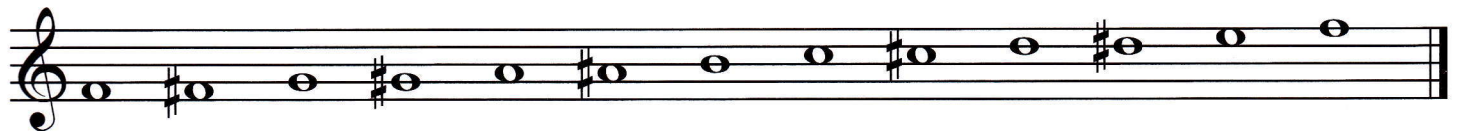
The ascending chromatic scale starting on C uses sharp signs.



The descending chromatic scale starting on C uses flat signs.



An ascending chromatic scale starting on F looks like this:



A descending chromatic scale starting on G looks like this:



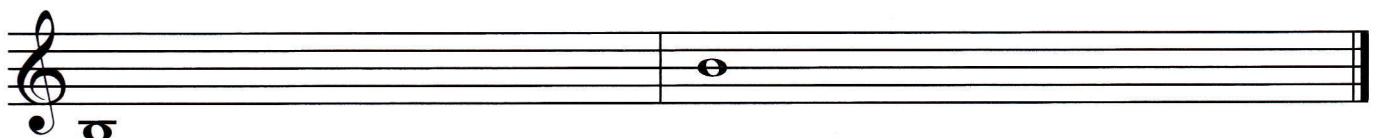
## Exercises

1 What is the distance between each pitch in a chromatic scale? \_\_\_\_\_

2 Write an ascending and descending chromatic scale starting on A.



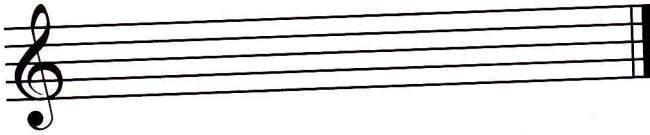
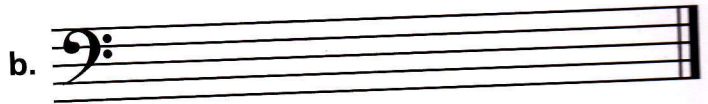
3 Write an ascending and descending chromatic scale starting on B.



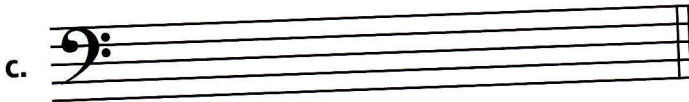
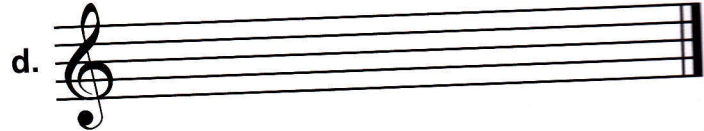
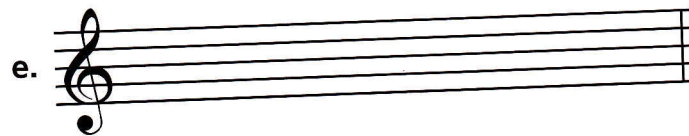
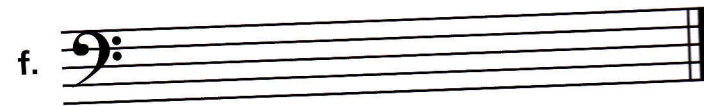
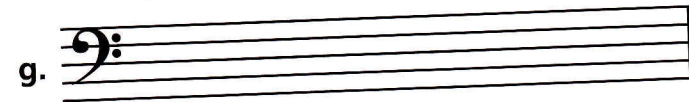
**Unit 8 ACTIVITY 3** Name/Class \_\_\_\_\_**Major and Chromatic Scales**

Key Sig.	Scale
<input type="text"/>	<input type="text"/>
2-20	4-40

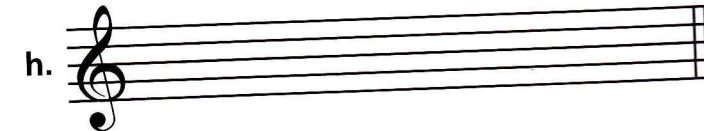
- 1** Write the indicated key signature, then write the scale using beamed eighth notes.

a. A $\flat$  majorb. F $\sharp$  major

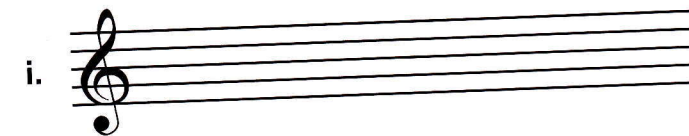
c. E major

d. G $\flat$  majore. E $\flat$  majorf. C $\sharp$  majorg. D $\flat$  major

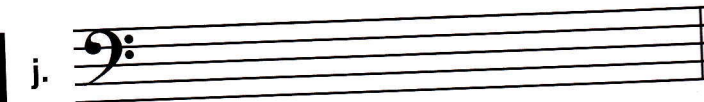
h. B major



i. A major



j. G major

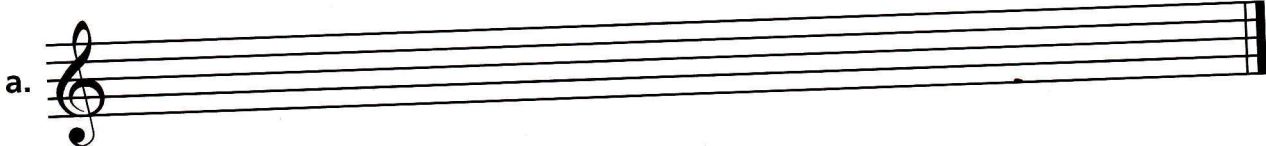


- 2** A chromatic scale is made up entirely of \_\_\_\_\_.

 $\frac{1}{2}$ -1

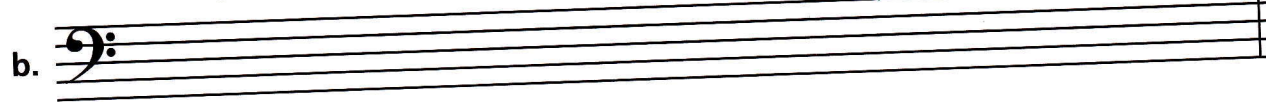
- 3** Using half notes, write chromatic scales starting on the following notes as indicated.

a. D ascending (use sharps)

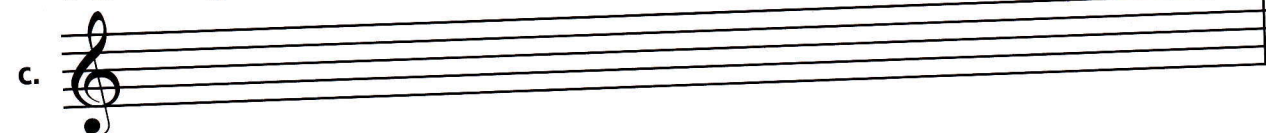


13-39

b. E descending (use flats)



c. G ascending (use sharps)



100