








$\frac{3}{8}$ and $\frac{6}{8}$ can also be performed at fast tempos: count each $\frac{3}{8}$ measure in 1 count and each $\frac{6}{8}$ measure in 2 counts.

There is a strong beat on 1 in $\frac{3}{8}$ time
and on beats 1 and 4 in $\frac{6}{8}$ time.




In fast $\frac{3}{8}$ time:

 or  = 1/2 beat
 = 1 beat

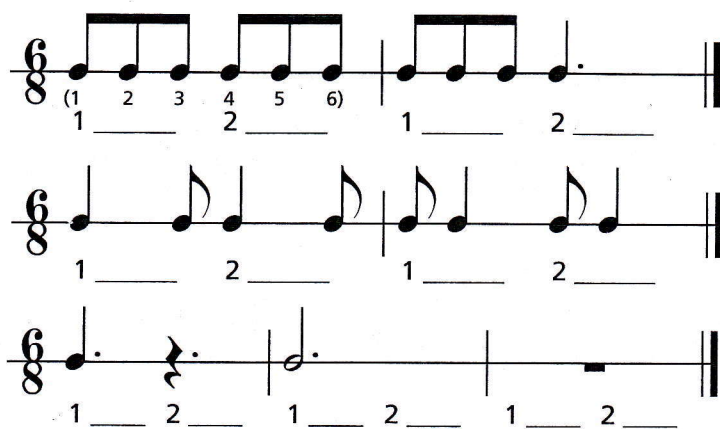
 or  = $\frac{2}{3}$ beat
  = 1 beat

$\text{♩}, \text{♩} = 1 \text{ beat}$

In fast $\frac{6}{8}$ time:

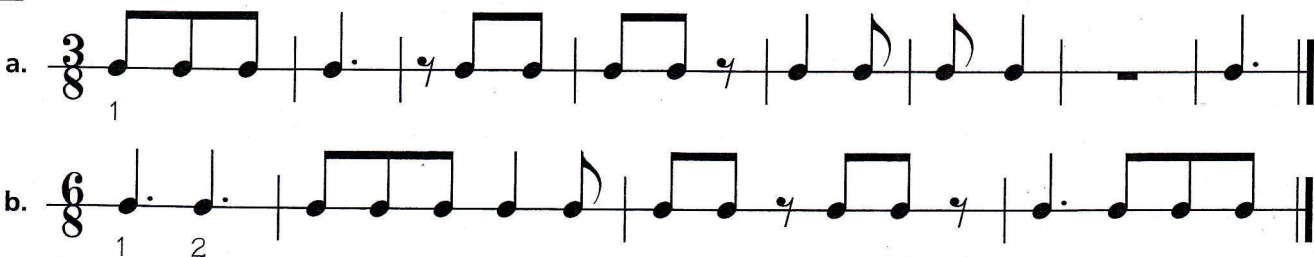
 $\frac{1}{4}$,  $\frac{1}{8}$ and  receive the same number of beats as in $\frac{3}{8}$ time.

In addition, $\zeta = 1$ beat, \circ or $\text{—} = 2$ beats

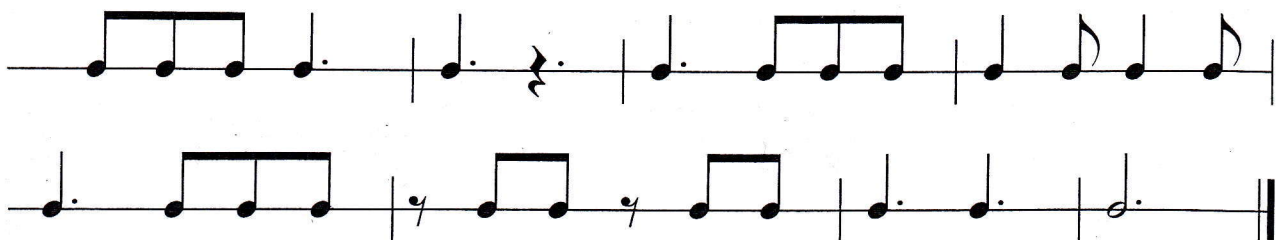


Exercises

- 1** Write the strong beats below the notes in a fast tempo.



- 2** Write the correct time signature and the strong beats below the notes in a fast tempo.



Unit 11 ACTIVITY 2 Name/Class _____ **$\frac{3}{8}$ and $\frac{6}{8}$ Time Signatures at Fast Tempos**

- 1** In $\frac{3}{8}$ time at slow tempos, each measure is counted in _____.
At fast tempos, each measure is counted in _____.

2-4

- 2** In $\frac{6}{8}$ time at slow tempos, each measure is counted in _____.
At fast tempos, each measure is counted in _____.

2-4

- 3** Add bar lines and a double bar to each of the following examples.

Alessandro Scarlatti
(1660-1725)

Se Florinda è fedele

1-16

American Folk Song

Over the River and Through the Woods

1-11

- 4** In $\frac{3}{8}$ time at fast tempos, how many beats do the following notes and rests receive?

- a. _____ b. _____ c. _____
d. _____ e. _____ f. _____
g. _____ h. _____

3-24

- 5** In $\frac{6}{8}$ time at fast tempos, how many beats do the following receive?

- a. _____ b. _____ c. _____ d. _____
e. _____ f. _____ g. _____ h. _____

3-24

- 6** Add the time signature and complete the measures by adding one note or rest where indicated.

T. Sig. Note/Rest

3

2-14

100