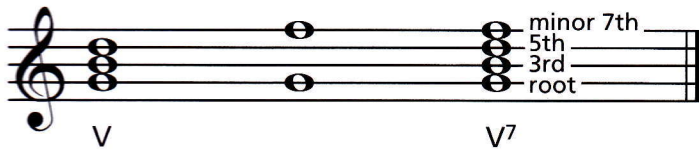


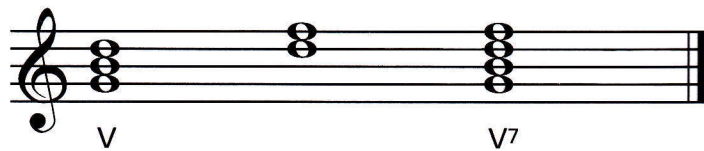
The V7 (Dominant 7th) Chord

In many pieces, a V7 (dominant 7th) chord is used instead of a V (dominant) triad. To build a V7 chord, add a minor 7th above the root of the V triad (or a minor 3rd above the 5th). The V7 is a chord and not a triad because it has 4 notes rather than 3.

Dominant + minor 7th = Dominant 7th

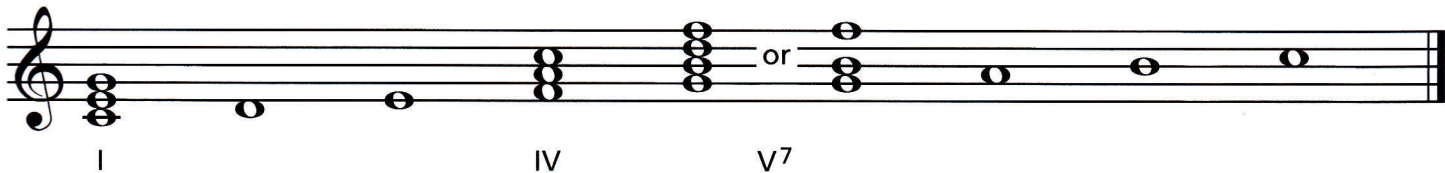


Dominant + minor 3rd = Dominant 7th



Often, the 5th of the V7 chord is omitted. The V7 chord then would have the same number of tones as the I and IV chords while still retaining the quality of a 7th chord. This also allows the music to be sung or performed by as few as three singers or instrumentalists.

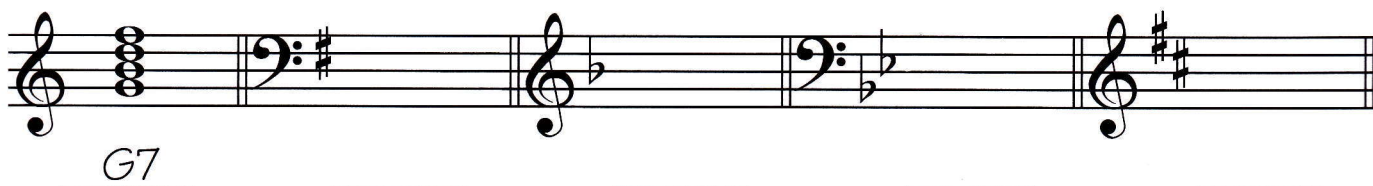
The three primary chords are now I, IV and V7.



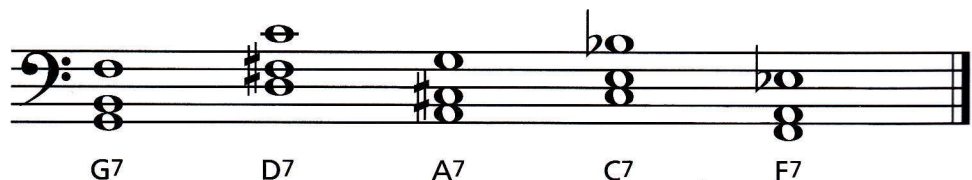
Exercises

- Write the V7 chord for each key. Write the key name and letter name of each chord.

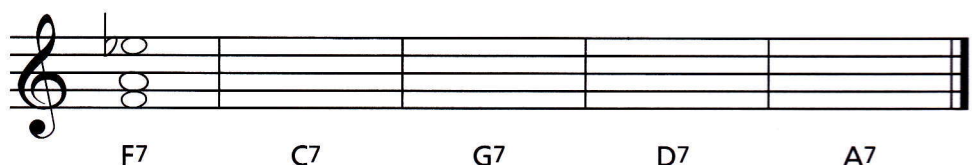
Key of: C Major



- Fill in the missing notes in the following V7 chords. Which interval did you add? _____



- Write the following V7 chords with the 5th omitted—include the accidentals.



1 A V7 chord is also called a _____ chord.

2 A V7 chord is comprised of a root, major 3rd, perfect 5th, and a _____.

3 Write a note a minor 7th above each given note.

4 Write the major key above the staff and the letter name of the V7 chord below the staff.

Key of: D

a. 

b.

Musical notation for exercise b. It consists of three systems of staves. The first system has a bass staff with a key signature of two flats and a treble staff with a key signature of three sharps. The second system has a bass staff with a key signature of two sharps and a treble staff with a key signature of two flats. The third system has a bass staff with a key signature of two flats and a treble staff with a key signature of two flats. Each system contains a single melodic line in the upper staff and a corresponding bass line in the lower staff, with various rests and accidentals.

c.  2-28

5 Write the letter name of each V7 chord.

A bass clef staff showing the C#7 chord and its inversions. The notes are C#, F#, G, and B. The chord is shown in root position, first inversion, second inversion, and third inversion. The label "C#7" is written below the staff.

Musical notation for the bass line of 'The Rose Tree'. The key signature is one flat (B-flat). The melody consists of six measures, each containing a single note. The notes are: G2 (one line below), F2 (two lines below), E2 (three lines below), D2 (four lines below), C2 (five lines below), and B1 (six lines below). The notation is written on a single staff with a bass clef.

6 Write the following V7 chords.