

Whole, Half and Quarter Rests

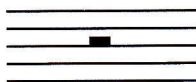
Music is not only made up of sounds, but also the silence between sounds.
The duration of musical silence is determined by the value of the REST.

A WHOLE REST means to rest for a whole measure.



It hangs down from the 4th line.

A HALF REST is equal to half of a whole rest.



It sits on the 3rd line.

A QUARTER REST is equal to one quarter of a whole rest.



= =
 1 2 4
 Whole rest Half rests Quarter rests

=
 1 2
 Half rest Quarter rests

Notes	=	Rests
	=	
	=	
	=	

In $\frac{4}{4}$ time:

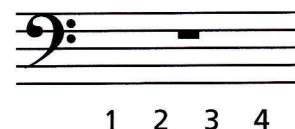
Quarter rests are equal to 1 beat.



Half rests are equal to 2 beats.



Whole rests are equal to 4 beats.



Exercises

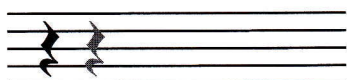
1 Fill in the correct number:

- 2 =
- =
- =
- =

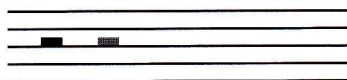
2 Fill in the correct number:

- =
- =
- =
- =

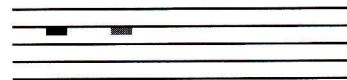
3 Trace the 2nd quarter rest, then draw 4 more.



4 Fill in the 2nd half rest, then draw 4 more.



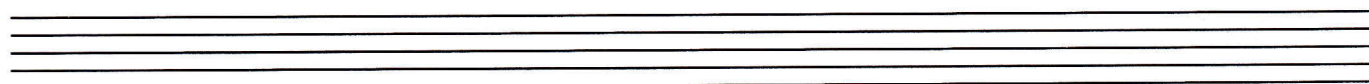
5 Fill in the 2nd whole rest, then draw 4 more.

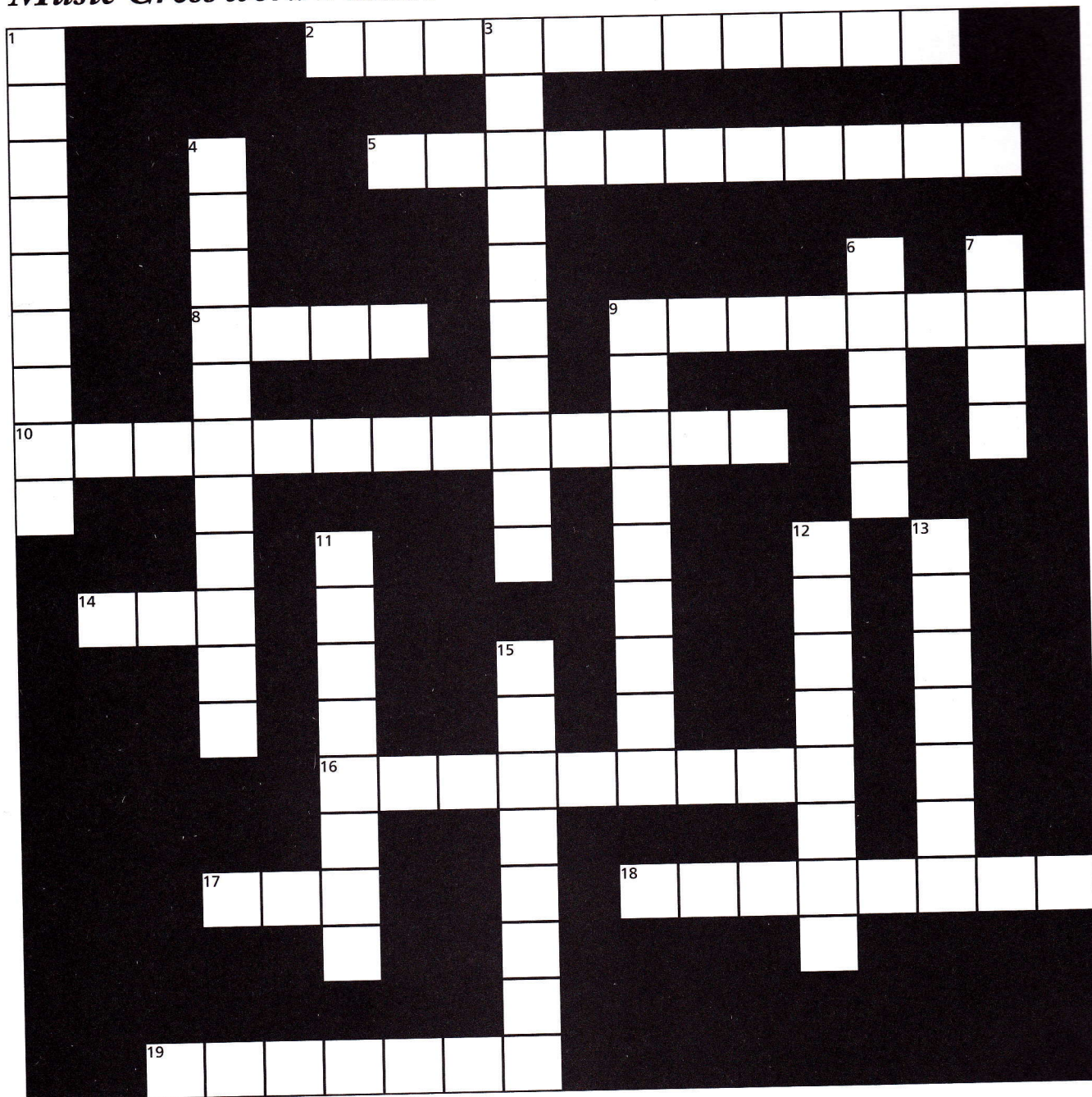


6 a. Divide the staff below into 4 measures with a double bar at the end.

b. Add a $\frac{4}{4}$ time signature.

c. Fill in the 1st bar with a whole rest, the 2nd bar with 2 half rests, the 3rd bar with 4 quarter rests, the 4th bar with 1 half rest and 2 quarter rests.



Unit 2 ACTIVITY 5 Name/Class _____**Music Crossword Puzzle****ACROSS**

2. Lines that extend the lower and upper ranges of a staff (2 words)
5. Rest that receives 1 beat of silence in $\frac{1}{4}$ time (2 words)
8. Symbol for a musical silence
9. The length of a note
10. Two stacked numbers appearing after a clef sign (2 words)
14. One whole rest = _____ half rests.

16. Rest that receives 4 beats of silence in $\frac{1}{4}$ time (2 words)
17. Another name for measure
18. Rest that receives 2 beats of silence in $\frac{1}{4}$ time (2 words)
19. Line that divides music into equal sections (2 words)

DOWN

1. Note that receives 4 beats in $\frac{1}{4}$ time (2 words)

3. The bass and treble staves connected by a brace and bar line (2 words)
4. Note that receives 1 beat in $\frac{1}{4}$ time (2 words)
6. The lines and spaces music is written on
7. _____ quarter rests = one whole rest
9. Lines at the end of a piece of music (2 words)
11. If a note appears on or above the 3rd line of

- the staff, the stem extends _____.
12. An introduction given before a piece of music that is performed to indicate the tempo
13. The area between bar lines
15. Note that receives 2 beats in $\frac{1}{4}$ time (2 words)