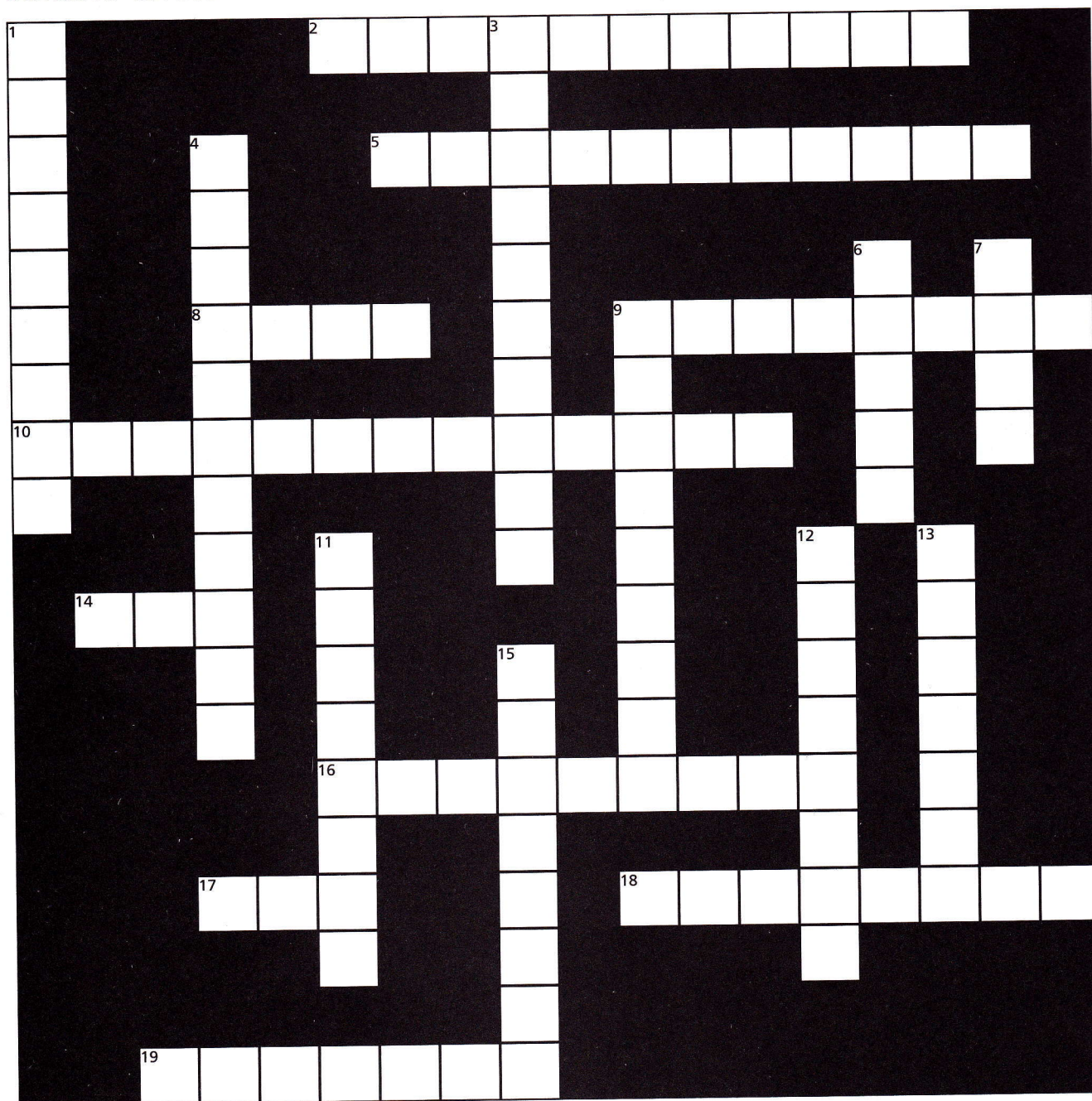


**Unit 2 ACTIVITY 5** Name/Class \_\_\_\_\_**Music Crossword Puzzle****ACROSS**

2. Lines that extend the lower and upper ranges of a staff (2 words)
5. Rest that receives 1 beat of silence in  $\frac{4}{4}$  time (2 words)
8. Symbol for a musical silence
9. The length of a note
10. Two stacked numbers appearing after a clef sign (2 words)
14. One whole rest = \_\_\_\_\_ half rests.
16. Rest that receives 4 beats of silence in  $\frac{4}{4}$  time (2 words)
17. Another name for measure
18. Rest that receives 2 beats of silence in  $\frac{4}{4}$  time (2 words)
19. Line that divides music into equal sections (2 words)

**DOWN**

3. The bass and treble staves connected by a brace and bar line (2 words)
4. Note that receives 1 beat in  $\frac{4}{4}$  time (2 words)
6. The lines and spaces music is written on
7. \_\_\_\_\_ quarter rests = one whole rest
9. Lines at the end of a piece of music (2 words)
11. If a note appears on or above the 3rd line of the staff, the stem extends \_\_\_\_\_.
12. An introduction given before a piece of music that is performed to indicate the tempo
13. The area between bar lines
15. Note that receives 2 beats in  $\frac{4}{4}$  time (2 words)



Fill in the correct number:

1  $\underline{\hspace{1cm}}$   $\text{♩} = \text{♩}$

2  $\underline{\hspace{1cm}}$   $\text{♩} = \text{♩}$

3  $\underline{\hspace{1cm}}$   $\text{♩} = \text{♩} \text{ ♩}$

4 The duration of a  $\text{♩}$  is (circle one) longer or shorter than a  $\text{♩}$

5 When the notes are written on or above the 3rd line of the staff, stems extend (circle one) upward or downward on the left side of the notehead.

6 Music is divided into equal parts by  $\underline{\hspace{2cm}}$ .

7 A  $\underline{\hspace{2cm}}$  is written at the end of a piece of music.

8 The upper number of the time signature indicates how many  $\underline{\hspace{1cm}}$  are in each measure.

The bottom number of the time signature indicates what type of note receives  $\underline{\hspace{1cm}}$  beat.

9 When a time signature contains a 4 as the top number, it means  $\underline{\hspace{1cm}}$  beats in each measure.

When a time signature contains a 4 as the bottom number, it means a  $\underline{\hspace{1cm}}$  note receives  $\underline{\hspace{1cm}}$  beat.

10  $\text{♩}$  is called a  $\underline{\hspace{1cm}}$ . In  $\frac{4}{4}$  time, rest for  $\underline{\hspace{1cm}}$  beats.

$\text{♩}$  is called a  $\underline{\hspace{1cm}}$ . In  $\frac{4}{4}$  time, rest for  $\underline{\hspace{1cm}}$  beats.

$\text{♩}$  is called a  $\underline{\hspace{1cm}}$ . In  $\frac{4}{4}$  time, rest for  $\underline{\hspace{1cm}}$  beat.

11 Draw 4 quarter rests on the staff:

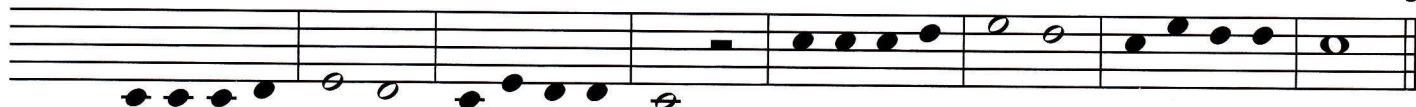
Draw 2 half rests on the staff:

Draw 1 whole rest on the staff:

12 In the example below, draw a treble clef and  $\frac{4}{4}$  time signature. Add the stems where necessary and write the beats under the notes.

Au Claire de la Lune

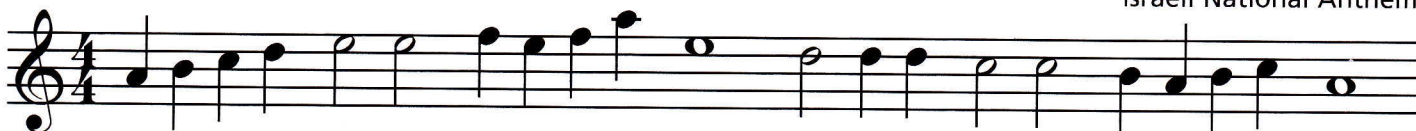
French Folk Song



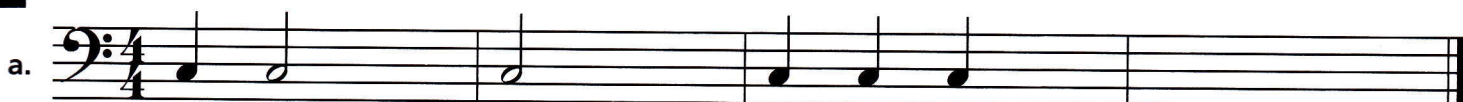
13 Add bar lines and a double bar to the example below. Count and clap; say and clap. Write the names of the notes below the staff.

Hatikvah

Israeli National Anthem



14 Fill in the missing beats with notes in the 2nd space by adding only one note in each measure.



Fill in the missing beats with rests by adding only one rest in each measure.



**1** How many lines are on a single staff? \_\_\_\_\_

**2** How many spaces are on a single staff? \_\_\_\_\_

**3** Is the 5th line at the bottom or top of the staff?  
\_\_\_\_\_

**4** Which clef is also known as the G clef? \_\_\_\_\_

**5** The note names of the five lines in the treble clef from bottom to top are:  
\_\_\_\_\_

**6** The note names of the four spaces in the treble clef from bottom to top are:  
\_\_\_\_\_

**7** The line through middle C is called a \_\_\_\_\_ line.

**8** Which clef is also known as the F clef? \_\_\_\_\_

**9** The note names of the five lines in the bass clef from bottom to top are:  
\_\_\_\_\_

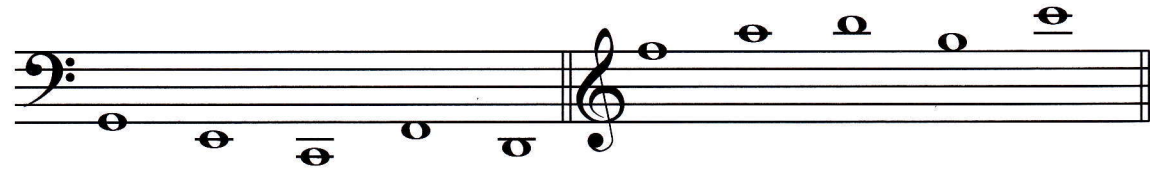
**10** The note names of the four spaces in the bass clef from bottom to top are:  
\_\_\_\_\_

**11** Write the letter names of the notes.

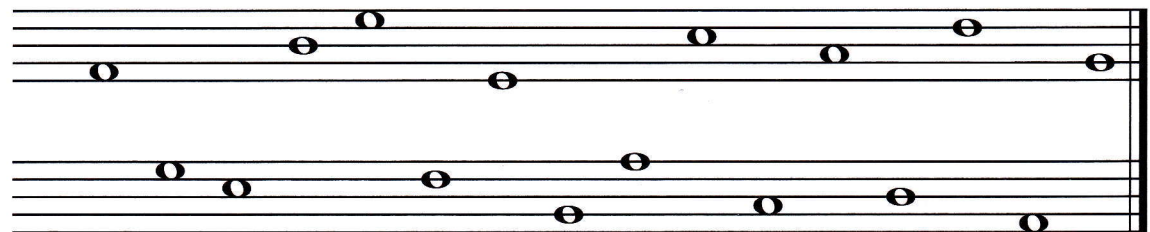


a. \_\_\_\_\_ b. \_\_\_\_\_ c. \_\_\_\_\_ d. \_\_\_\_\_ e. \_\_\_\_\_ f. \_\_\_\_\_

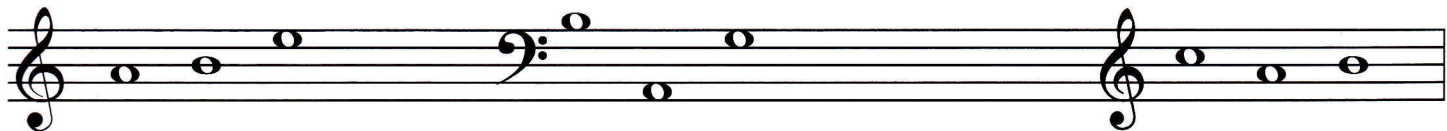
**12** Write the letter names of the notes.



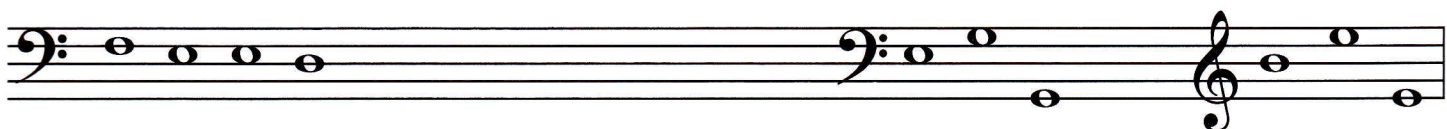
**13** Draw the grand staff and name the notes.



**14** Spell the words to complete the sentences below.



\_\_\_\_\_ took his lunch \_\_\_\_\_ and went downtown in a \_\_\_\_\_ to

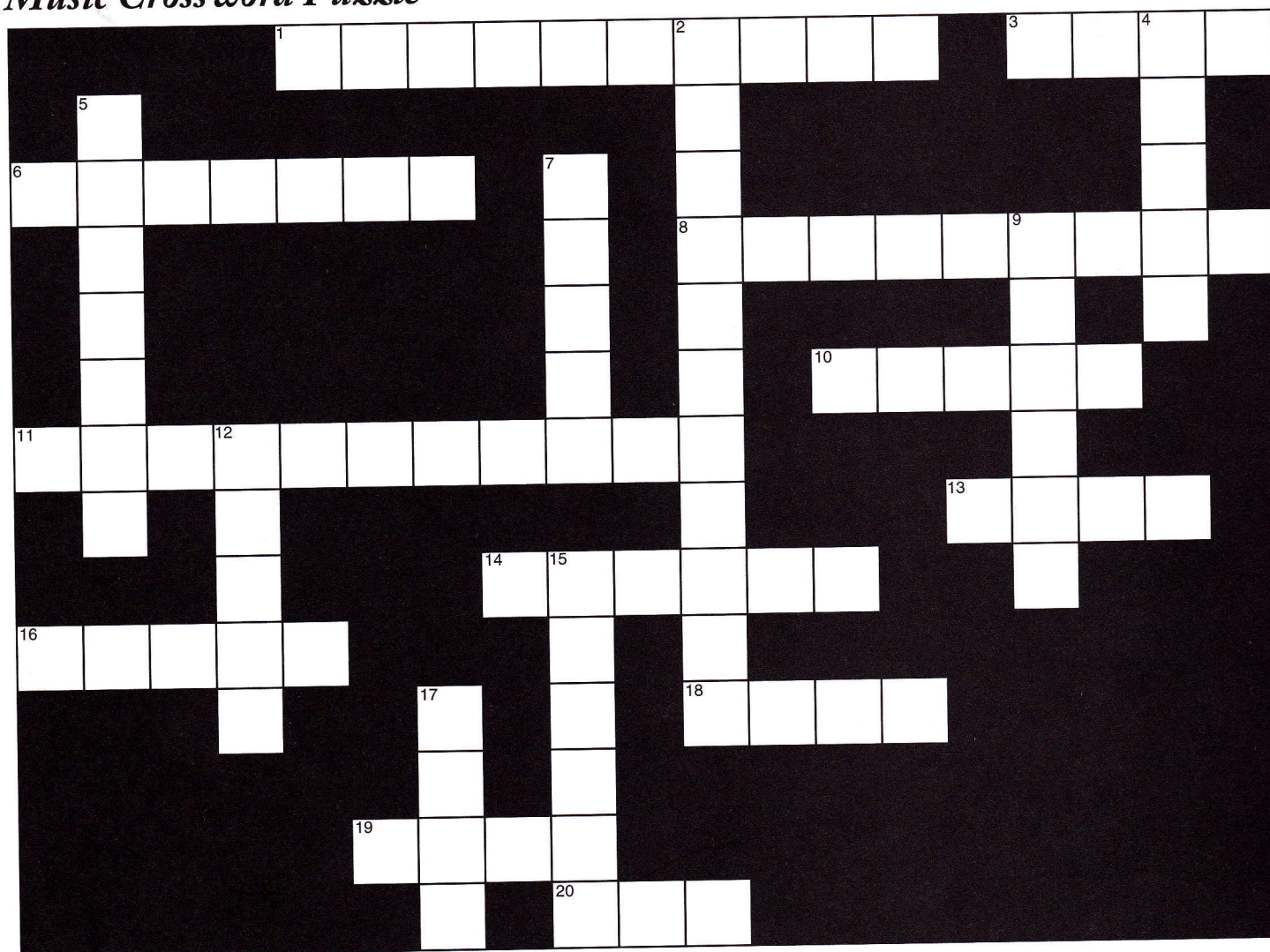


\_\_\_\_\_ the pigeons in the park. While eating his \_\_\_\_\_ sandwich, a \_\_\_\_\_



flew by and barely missed his \_\_\_\_\_. \_\_\_\_\_ decided to go home.



**Unit 1 ACTIVITY 5** Name/Class \_\_\_\_\_**Music Crossword Puzzle****ACROSS**

- |   |  |
|---|--|
| 1. The bass and treble<br>staves connected by a<br>brace and barline<br>(2 words) | 13. A sign that helps<br>organize the staff so<br>notes can be easily<br>read        |
| 3. Clef used for notes in<br>the lower pitch<br>ranges                            | 14. Good Boys Do Fine<br>_____ (bass staff<br>line notes)                            |
| 6. Another name for<br>the musical sounds<br>represented by notes                 | 16. The oval-shaped<br>symbols placed on<br>the staff to represent<br>musical sounds |
| 8. The staff on which F<br>is the fourth line<br>(2 words)                        | 18. What the treble staff<br>space notes spell                                       |
| 10. Another name for<br>the bass clef<br>(2 words)                                | 19. All _____ Eat Grass<br>(bass staff space<br>notes)                               |
| 11. Lines that extend the<br>lower and upper<br>ranges of a staff<br>(2 words)    | 20. Line number 5 of the<br>staff is the _____<br>line.                              |

**DOWN**

- |  |   |
|--|---|
| 2. The staff on which G<br>is the second line<br>(2 words)                       | 15. Is space number 1<br>the <i>highest</i> or <i>lowest</i><br>space of the staff? |
| 4. The five lines and<br>four spaces upon<br>which music is<br>written           | 17. Every _____ Boy<br>Does Fine (treble<br>staff line notes)                       |
| 5. The "C" nearest the<br>center of a piano<br>keyboard (2 words)                |   |
| 7. Music notes are<br>named after the first<br>_____ letters of the<br>alphabet. |   |
| 9. Clef used for notes in<br>the higher pitch<br>ranges                          |   |
| 12. Another name for<br>the treble clef<br>(2 words)                             |   |

**Unit 5 ACTIVITY 3** Name/Class \_\_\_\_\_

**Matching** Draw lines matching the terms on the left with their definitions on the right.

**1 Tempo Marks and Dynamic Signs****Accelerando**

Gradually softer

**Adagio**

Moving along (walking speed)

**Allegro**

Lively and fast

**Andante**

Gradually slower

**Crescendo**

Gradually faster

**Diminuendo**

Moderately

**Largo**

Gradually louder

**Moderato**

Very slow

**Ritardando**

Quickly, cheerfully

**Vivace**

Slow

5-50

**Matching****2 Other Musical Terms****Accent**

Hold the note for its full value

**Coda**

Rate of speed—how fast or slow the music is to be played

**Da Capo**

An added ending

**Dal Segno**

Hold the note longer than its normal value (approximately twice the normal duration)

**Fermata**

Play the note short and detached

**Fine**

A sudden, strong accent

**Sforzando**

The end

**Staccato**

Repeat from the beginning

**Tempo**

Repeat from the sign

**Tenuto**

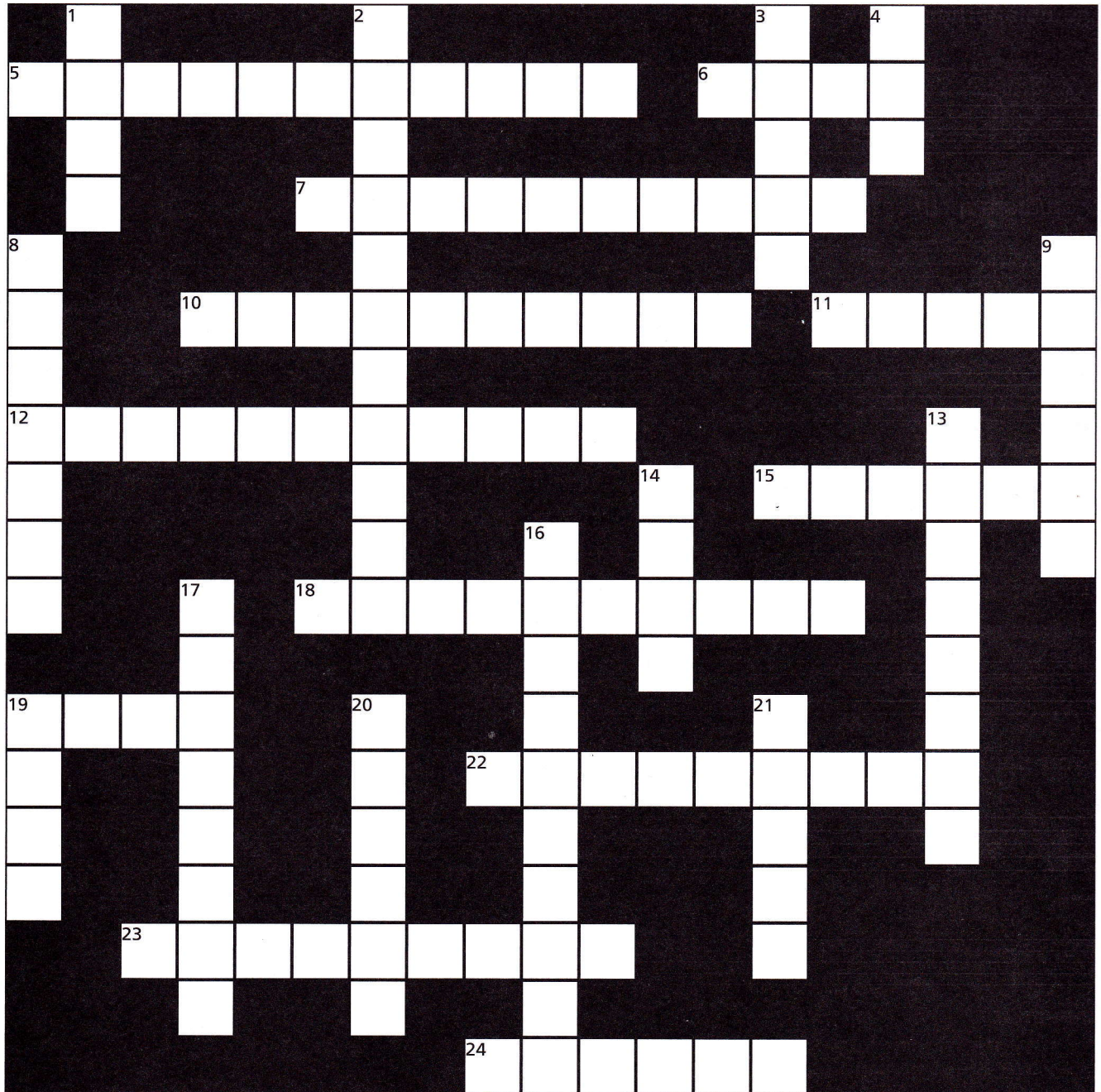
Play the note louder, with a special emphasis

5-50

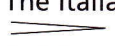

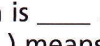
100



# Music Crossword Puzzle



## ACROSS

5. The Italian word for the  sign is \_\_\_\_.
6. *Dal Segno* (D.S.) means repeat from the \_\_\_\_.
7. The Italian words for *mp* are \_\_\_\_.
10. *Moderato* means \_\_\_\_.
11. The Italian word for *f* is \_\_\_\_.
12. The English translation of *Andante* is \_\_\_\_.
15. The symbol below the note to the right is an  \_\_\_\_.
18. The Italian word for *ff* is \_\_\_\_.
19. *Mezzo piano* means moderately \_\_\_\_.
22. The Italian word for the  sign is \_\_\_\_.
23. *Da Capo* (D.C.) means repeat from the \_\_\_\_.
24. *Rondo Alla Turca* was composed by Wolfgang Amadeus \_\_\_\_.

## DOWN

1. *issimo* means \_\_\_\_.
2. The Italian word for gradually faster is \_\_\_\_.
3. The Italian word for *p* is \_\_\_\_.
4. Fine means the \_\_\_\_.
8. The sign that means to hold a note longer than its normal value is a \_\_\_\_.
9. The sign that means to hold a note for its full value is a \_\_\_\_.
13. The English translation of *Largo* is \_\_\_\_.
14. The English translation of *Vivace* is lively and \_\_\_\_.
16. The Italian word for gradually slower is \_\_\_\_.
17. *Staccato* means to play the note short and \_\_\_\_.
19. The English translation of *Adagio* is \_\_\_\_.
20. A *Coda* (⌂) is an added \_\_\_\_.
21. The Italian word that tells how fast or slow to play the music is \_\_\_\_.