







- 1**  is called a \_\_\_\_\_. In  $\frac{4}{4}$  time, it receives \_\_\_\_\_ beat(s).
-  is called a \_\_\_\_\_. In  $\frac{4}{4}$  time, it receives \_\_\_\_\_ beat(s).
-  is called a \_\_\_\_\_. In  $\frac{4}{4}$  time, it receives \_\_\_\_\_ beat(s).
-  is called a \_\_\_\_\_. In  $\frac{4}{4}$  time, rest for \_\_\_\_\_ beat(s).
-  is called a \_\_\_\_\_. In  $\frac{4}{4}$  time, rest for \_\_\_\_\_ beat(s).
-  is called a \_\_\_\_\_. In  $\frac{4}{4}$  time, rest for \_\_\_\_\_ beat(s).

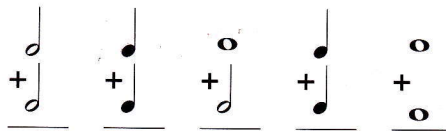
1-12

- 2** Draw a bass clef and write the  $\frac{4}{4}$  time signature. Divide the entire staff line below into four equally spaced measures with a double bar at the end. Write four quarter notes on different pitches in each measure so that their stem direction alternates within the measure. Name the notes on the lines below the staff.



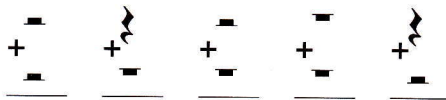
Clef,	
T-Sig.	1-2
Bars	
	2-8
Notes (each measure)	
	2-8

- 3** Add the following notes to get the total number of beats in  $\frac{4}{4}$  time.



2-10

- 4** Add the following rests to get the total number of beats in  $\frac{4}{4}$  time.



2-10

- 5** Draw a treble clef. Write the  $\frac{4}{4}$  time signature, and add bar lines and a double bar at the end. Write the beats below each measure, and the names of the notes above the staff.

London Bridge

English Folk Song



Clef,	
T-Sig.	1-2
Bars	
	1-8
Notes (each measure)	
	1-8
Beats (each measure)	
	1-8

- 6** Fill in the missing beats by adding only one note on the 2nd space in each measure. Write the beats under each measure.



3-12

- 7** Fill in the missing beats by adding only one rest to each measure. Write the beats under each measure.



3-12

100